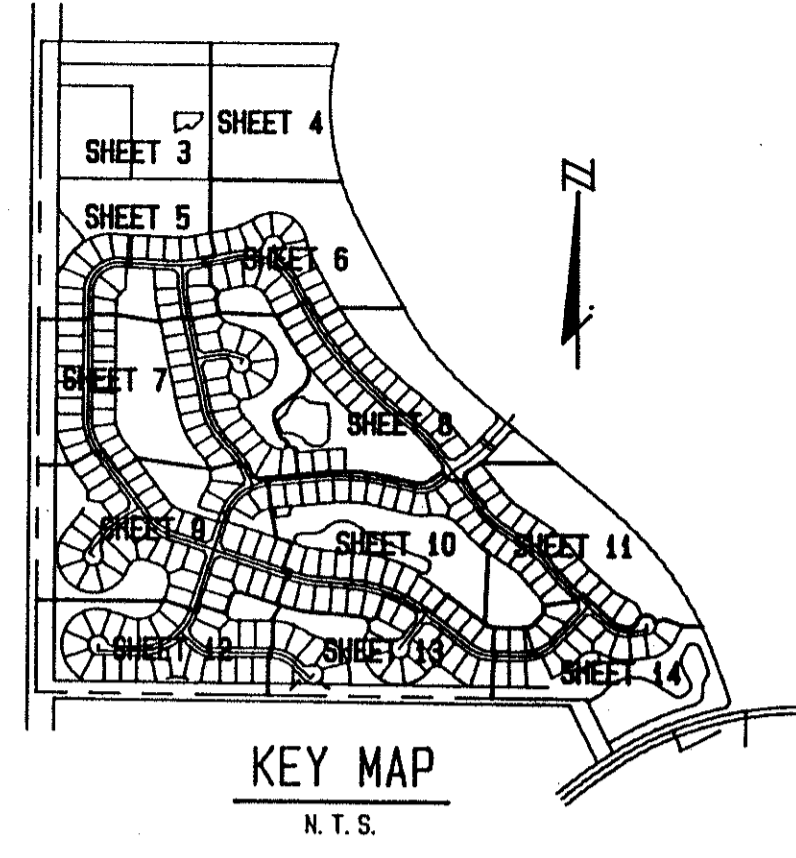


BINK'S FOREST OF THE LANDINGS AT WELLINGTON P. U. D. PLAT 2

IN PARTS OF SECTIONS 6 AND 7, TOWNSHIP 44 SOUTH, RANGE 41 EAST
 PALM BEACH COUNTY, FLORIDA
 IN FOURTEEN SHEETS **SHEET No. 4**

0269-010

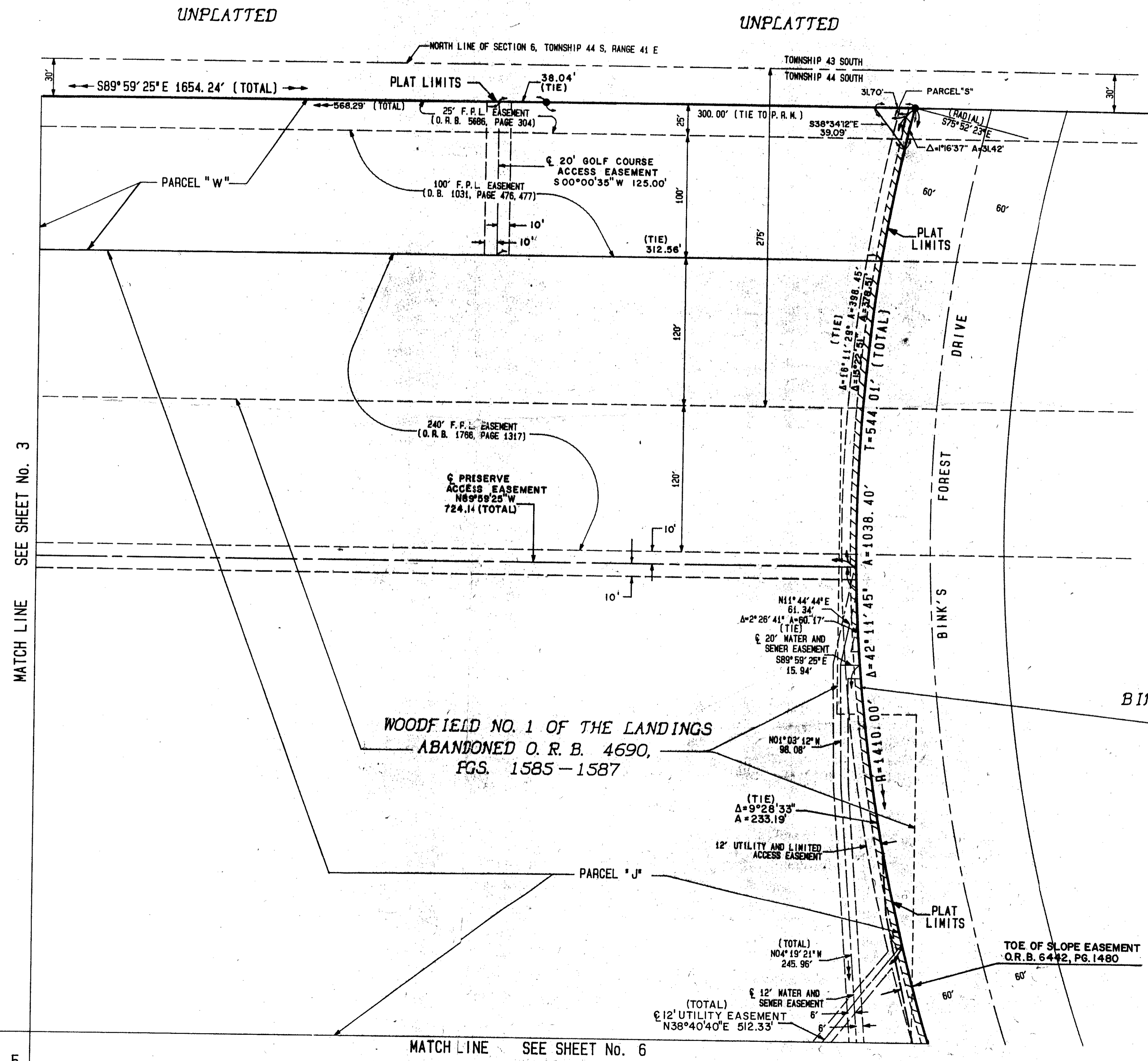
165



GEE AND JENSON
 ENGINEERS - ARCHITECTS - PLANNERS, INC.
 APRIL 1989
 SCALE IN FEET SCALE 1"=50'



STATE OF FLORIDA
 COUNTY OF PALM BEACH
 This plat was filed for
 record at _____ day
 of _____ 1993, and duly
 recorded in Plat Book No. _____
 on Pages _____ and _____
 Dorothy Wilken
 Clerk Circuit Court
 By: _____ D. C.



MATCH LINE SEE SHEET No. 3

MATCH LINE SEE SHEET No. 5

MATCH LINE SEE SHEET No. 6

BINK'S FOREST OF THE LANDINGS AT
 WELLINGTON P. U. D.
 PLAT 1
 P. B. 67, PGS. 56-67

PET. 78-287E
5/2/14/G

0269-010/165

SUBDIVISION *Bink's Forest of the Landings Plat 2*
 BOOK 70 FLOOD MAP #1000B
 FLOOD ZONE B ZONING RE
 QUAD # 77 ZIP CODE 33414
 SE
 PUD NAME *Wellington*

COMPUTED D. W. LEI/CADD
 DRAWN D. W. LEI/CADD
 CHECKED J. H. D.
 APPROVED _____

TAZ = 727

BINK'S FOREST OF THE LANDINGS AT WELLINGTON PLAT 2
 WATER MANAGEMENT TRACTS ARE THE PERPETUAL MAINTENANCE OBLIGATION OF FOURTH WELLINGTON, INC.